

Anti-ERBB3(HER3) hIgG1 Reference Antibody (Patribio)

Product Information

Product Name	Anti-ERBB3(HER3) hIgG1 Reference Antibody (Patribio)
Storage temp.	Store at 2-8°C short term (1-2 weeks).Store at ≤ -20°C long term. Avoid repeated freeze-thaw.
Catalog# / Size	GM-87129MAB-1mg / 1 mg GM-87129MAB-5mg / 5 mg GM-87129MAB-25mg / 25 mg GM-87129MAB-50mg / 50 mg GM-87129MAB-100mg / 100 mg

Antibody Information

Expression System	CHO
Aggregation	< 5% as determined by SEC-HPLC
Purity	> 95% as determined by SDS-PAGE
Endotoxin	< 1 EU/mg, determined by LAL gel clotting assay
Sterility	0.2 μm Filtered
Target	ERBB3
Clone	Patritumab
Alternative Names	ErbB-3, FERLK, LCCS2, MDA-BF-1, VSCN1, c-erbB-3, c-erbB3, erbB3-S, p180-ErbB3, p45-sErbB3, p85-sErbB3
Source/Isotype	Human IgG1(REEM), Kappa
Application	Flow cytometry
Description	Receptor tyrosine-protein kinase erbB-3, also known as HER3 (human epidermal growth factor receptor 3), is a membrane bound protein that in humans is encoded by the ERBB3 gene. During human development, ERBB3 is expressed in skin, bone, muscle, nervous system, heart, lungs, and intestinal epithelium.ERBB3 is expressed in normal adult human gastrointestinal tract, reproductive system, skin, nervous system, urinary tract, and endocrine system. ErbB3 is associated with targeted therapeutic resistance in numerous cancers including resistance to: HER2 inhibitors in HER2+ breast cancers; anti-estrogen therapy in ER+ breast cancers; EGFR inhibitors in lung and head and neck cancers; hormones in prostate cancers IGF1R inhibitors in hepatomas; BRAF inhibitors in melanoma. ErbB2 overexpression may promote the formation of active heterodimers

Version:3.1

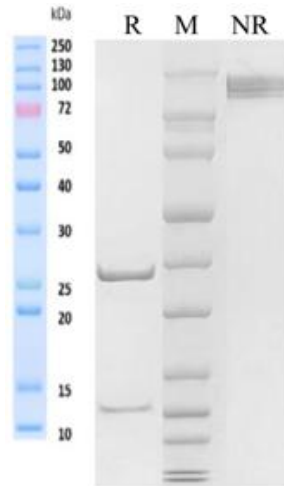
with ErbB3 and other ErbB family members without the need for ligand binding, resulting in weak but constitutive signaling activity.

Formulation

phosphate-buffered solution, pH 7.4.

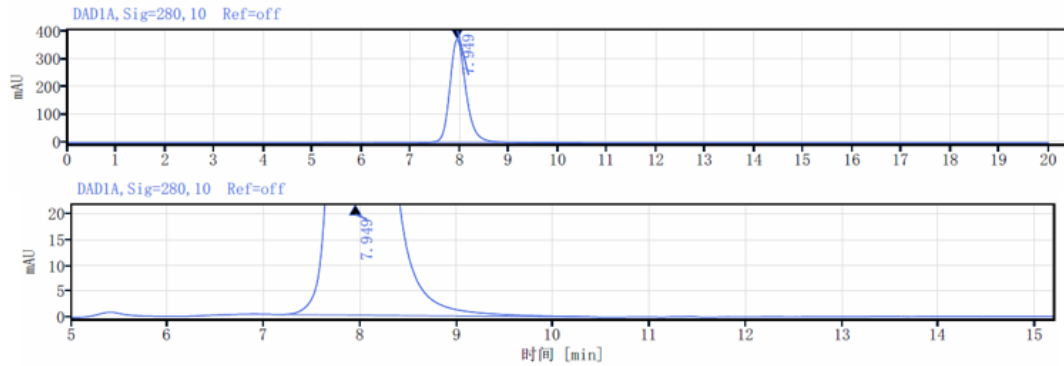
Data Examples

SDS-PAGE



On SDS-PAGE under reducing (R)/non-reducing(N-R) condition. The gel was stained overnight with Coomassie Blue. The purity of the protein is greater than 95%.

SEC-HPLC

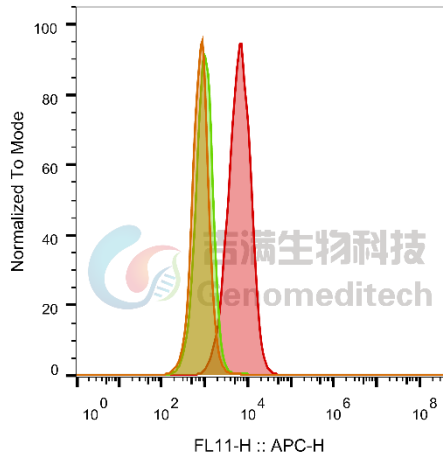


The purity of this product is more than 95% verified by SEC-HPLC

Data Examples

Flow cytometry

H_ERBB3(HER3) MC38 Cell Line (Catalog # GM-C19427) was stained with Anti-ERBB3(HER3) hlgG1 Reference Antibody (Patribio) (Catalog # GM-87129MAB) or isotype control antibody, followed by anti-Human IgG APC-conjugated Secondary Antibody.



SampleID	Geometric Mean : FL11-H
MC38 anti-ERBB3+APC-2nd	799
MC38 H_ERBB3 H_IgG+APC-2nd Ab	973
MC38 H_ERBB3 anti-ERBB3+APC-2nd Ab #8	6353

Fig. FACS